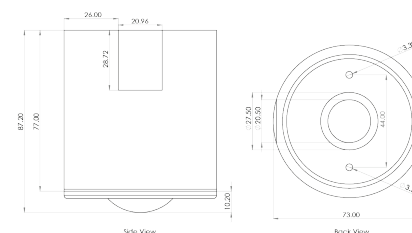
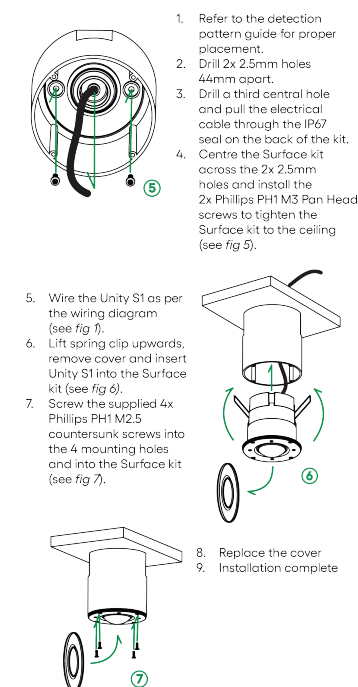


Data Specifications

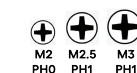
Dimensions - VS-S1-SMW (with S1 installed)



Surface (IP65)



Driver Requirements (Phillips)



Unity S1 Surface Kit



Install it your way, S1's surface mounting accessory allows for flexible installation with 20mm exclusion areas for conduit through wiring. It maintains IP65 protection, combining durability with ease of integration.

Order Codes

Product SKU	Description
VS-S1-SMW	S1 Surface Kit - White

Technical Specification

Material	Flame Retardant ABS+PC
Ingress Protection	IP65 - Recessed (Front Only) or Surface Mounted (All)
Warranty	5 Years